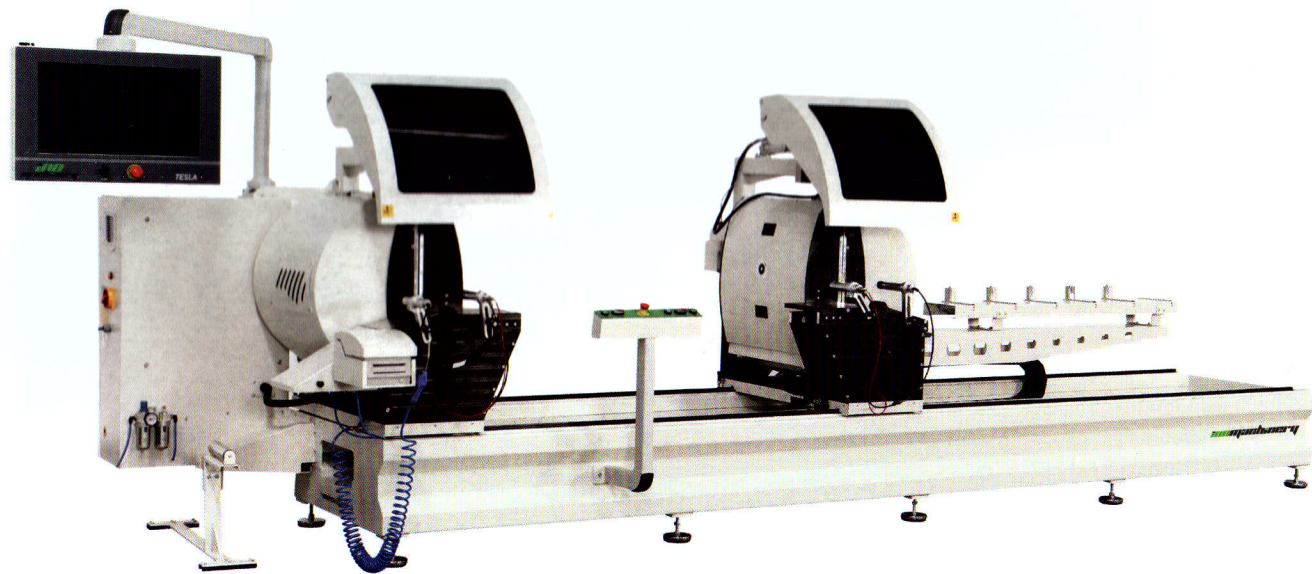


# CUPRA

## DOUBLE MITRE SAW



### MACHINE DESCRIPTION

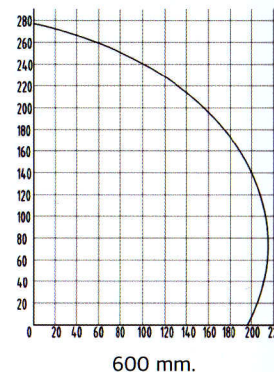
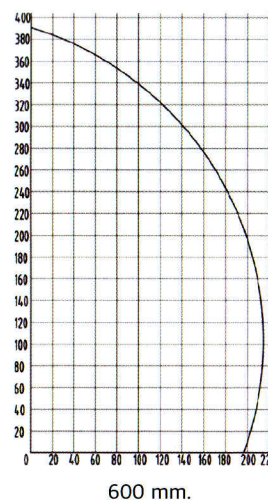
Automatic double mitre saw customized for aluminium profiles. The 600 mm. sawblades maintain a perfect capability for the user to cut large section aluminium profiles with a perfect precision and cut clearance both in architectural and industrial segment. Electrowelded and machined rigid steel construction. Net cutting length of 4.000 mm. that can be extended to 7.500 mm with software support.

PC user interface with 21,5" TFT-LED Screen + Intel i3 PC with 8GB RAM 500GB HDD.

Movable head is moving with rack and pinion with brushless servo motor and reducer through linear guides. Hydro-Pneumatic feeding of the cutting saws. Pulse spray mist coolant system.

The saw-feed mechanism is moving with a cross-section way following a bow type path to clamp the profile better, to maintain the perfect cut surface and also protect the sawblade's lifetime. Cutting heads tilting inside 45° outside 135° and 90° pneumatically through a cylinder the machine can be purchased in three alternatives. The first alternative tilts only outside, the second alternative tilts only inside; in these two models in between degrees can be adjusted manually. Third alternative heads can tilt inside and outside, but in this model in between degrees are not available.

- Sawblade Diameter : 600 mm. / 3.0 kW 2.800 rpm motors.
- Maximum cutting width : 198 mm.
- Maximum cutting height : 390 mm.
- Minimum cut in 45° tilted inside : 600 mm.
- Minimum cut in 45° tilted inside with pneumatic feed option : 579 mm.
- Total installed power : 10 kW / 20A / 400 V / 50-60 Hz. / 3Phase
- Air pressure and air consumption : 6-8 Bar. - 80 L/min.
- Protection covers moving up and down automatically.
- 2 pieces of horizontal and 1 piece vertical clamping pistons for each head.
- Roller conveyor connected on the movable head.
- Colored cables inside the electrical cabinet.
- CE Certificate / Users' manual - English Language.



### OPTIONAL EQUIPMENT

Data transfer package for working together with window production softwares. Importing data, label printing and transferring data to the CNC profile machining center via barcode.

Label printer.

Automatic profile height measurement system via pneumatic cylinder.

Extended cut, for cutting profiles longer than the length of the machine.

Step by step cut for corner cleats.

Manual central supports.

Dust extractor 3.0 kW with steel and plastic pipes.

